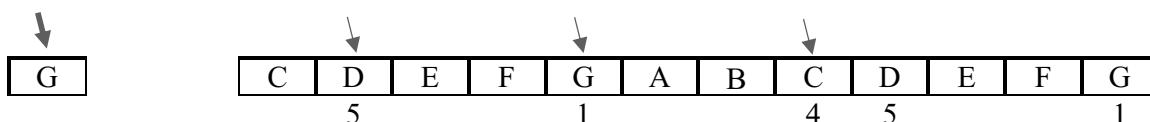


# SUSPENDED FOURTH

## NUMBERS

A suspended fourth is indicated by the number 4.  
Play the 1st, 4th and 5th notes counting from the bass note.



## NUMBERS

The number 4 is never alone in the suspended fourth, but always as 4 3 or 4#. This indicates the resolution of the dissonant fourth to the third of the chord.

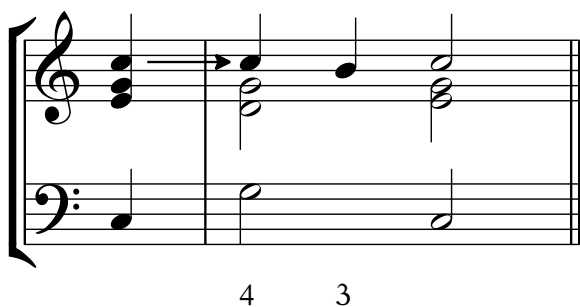
A suspended fourth reinforces the dynamic direction of a dominant.



## VOICE LEADING

Dissonances must be prepared. Therefore, the suspended fourth must be present in the previous chord and in the same voice.

This rule should be observed closely, but this also depends on which instrument is being played. For example, if one plays polyphonic arpeggios on the harpsichord, the preparation of the dissonance is hardly audible. This is different when playing on the organ, where each voice stands out.



## 8. Greensleeves

C or C sharp? D or D sharp?  
 Greensleeves is a folk song and everyone  
 performs it in their own way. There is no right  
 or wrong! Find out what pleases your ear.  
 I often find that the unusual version  
 is the most interesting.

Trad.  
 Setting by Monika Mandelartz

A - las, my love, you do me wrong to\_ cast me off dis - cour-teous-ly; And

I have lov - ed\_ you so long de - light - ing\_ in your\_ com - pa - ny.

Green - sleeves was all my joy,\_\_\_ Green - sleeves was my de-light,

Green - sleeves was my heart of gold, and\_ who but my la - dy\_ Green-sleeves.

# 50. Wie manchesmahl es sich begiebt

This arrangement from Selle's youth is full of joyful playing. He intended to have three four-part choirs perform as an echo. The first part of each choir is sung, and the other parts are instrumental. I have only noted the framework of the composition. This should serve as a basis for your arrangements.

Thomas Selle (1599–1663)  
Salzwedel Manuscript

### 1<sup>st</sup> Verse

Wie man-ches-mahl es sich be - giebt,  
Ver - ge - bens ist es und umb-sunst,

Wie man-ches-mahl es sich be - giebt,  
Ver - ge - bens ist es und umb-sunst,

Wie man-ches-mahl es sich be - giebt,  
Ver - ge - bens ist es und umb-sunst,

das ein Per-son die an - der liebt  
wannbey-der her-tze glüt in brünst

das ein Per-son die an - der liebt  
wannbey-der her-tze glüt in brünst

das ein Per-son die an - der liebt  
wannbey-der her-tze glüt in brünst

und \_\_\_ wird ihr nicht zu - thei - le  
und \_\_\_ ist da - bey kein Hei - le

und \_\_\_ wird ihr nicht zu thei - le  
und \_\_\_ ist da - bey kein Hei - le

und \_\_\_ wird ihr nicht  
und \_\_\_ ist da - bey